

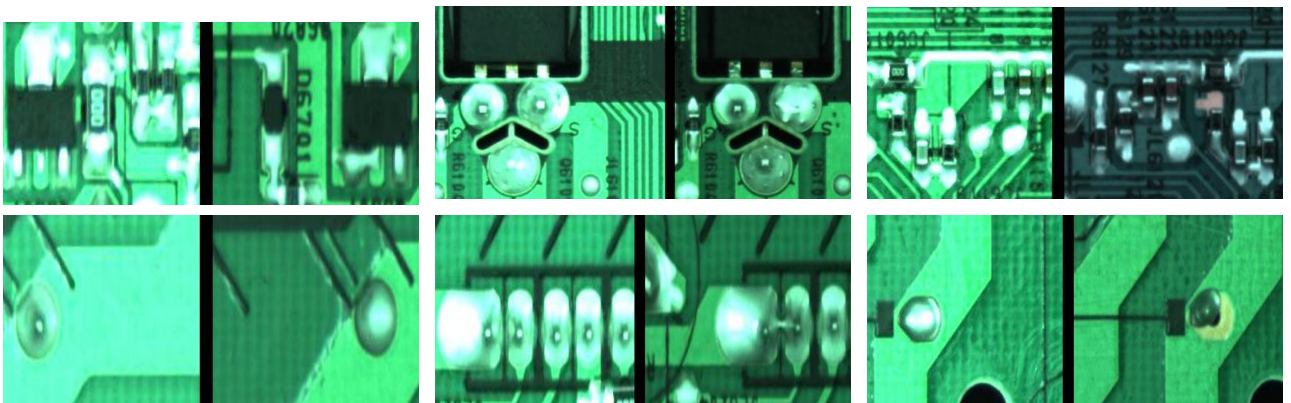
# *SPLIS* SPL-200

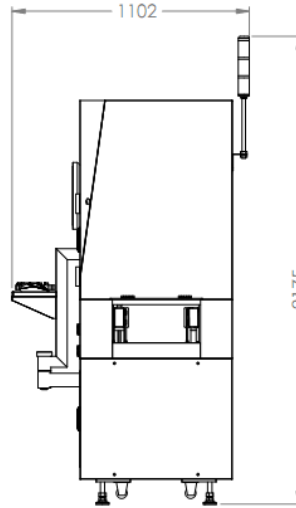
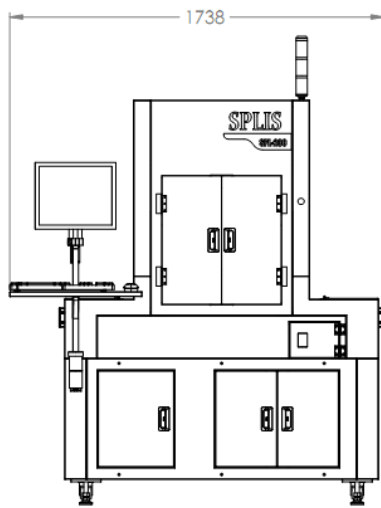
PWB OPTICAL INSPECTION SYSTEM



- Dip Process Hi-Speed Inspection
- 8.0 Mega Pixel CCD Color Camera
- Components Missing Inspection \*
- Pin Hole Inspection
- Pin Solder Inspection
- Leg Miss Inspection

## Inspection View





◇ Specification

<b>External dimension</b>		1738(W) × 1102(D) × 2175(H)mm
<b>Power supply / consumption</b>		AC100V 50/60Hz 1.5kVA /AC 240V 50/60Hz 1.5kVA
<b>Detection capability</b>		Missing Lead, Bridging, Pin Hole, No solder, Miss Part (1608~)
<b>Smallest component Inspection</b>		1608mm ~, 0.8mm pitch
<b>PCB board size</b>	Min Width	80X80
	Max Width	330 × 250mm
	Thickness	0.5~2.0mm
<b>PCB wrap</b>		Max 2 mm
<b>Vision system</b>	Camera	8.0 mega pixel
	Resolution	Approx. 52.0µm/pixel
	Field of view	130X217*
	Inspection time	1 sec / AREA X 4AREA
	Lens	DISTORTION LESS MACRO LENS
	Lighting	White LED
	Inspection method	High resolution color CCD camera system
<b>PCB loading time</b>		6sec + inspection time
<b>Machine accuracy</b>		±20 µm

<b>Support Four Block Image 4</b>	<b>DEPTH STROKE 130MM</b>
-----------------------------------	---------------------------

◇ Option items

<b>2D Code recognition</b>		Yes
<b>X-Y table Auto Adjustable Setting</b>		Unavailable(X-Y move is manual)
<b>Offline programming</b>		Option
<b>Cad Data conversion</b>		Option
<b>Centralise Judgement by operator</b>		yes
<b>Defect image save in Server</b>		Option